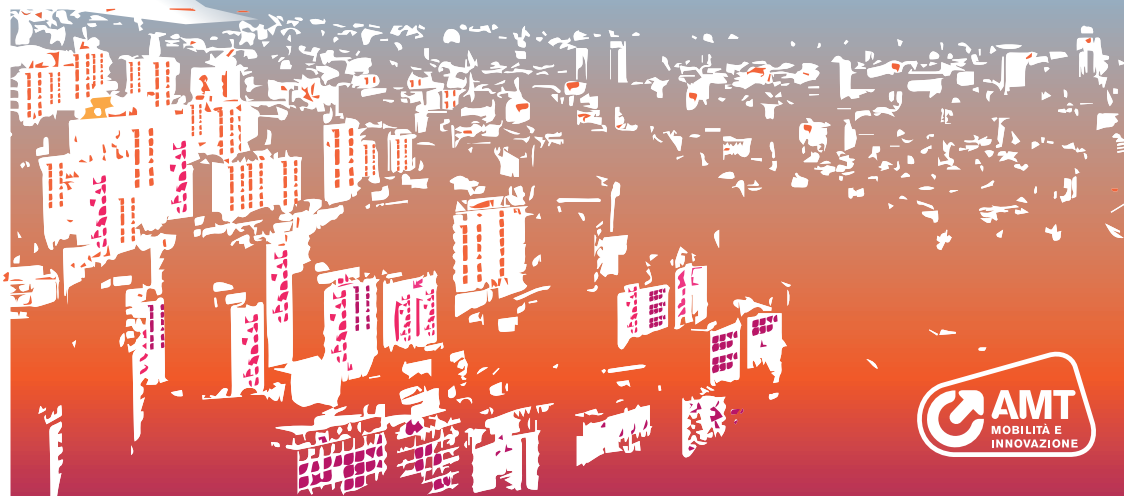


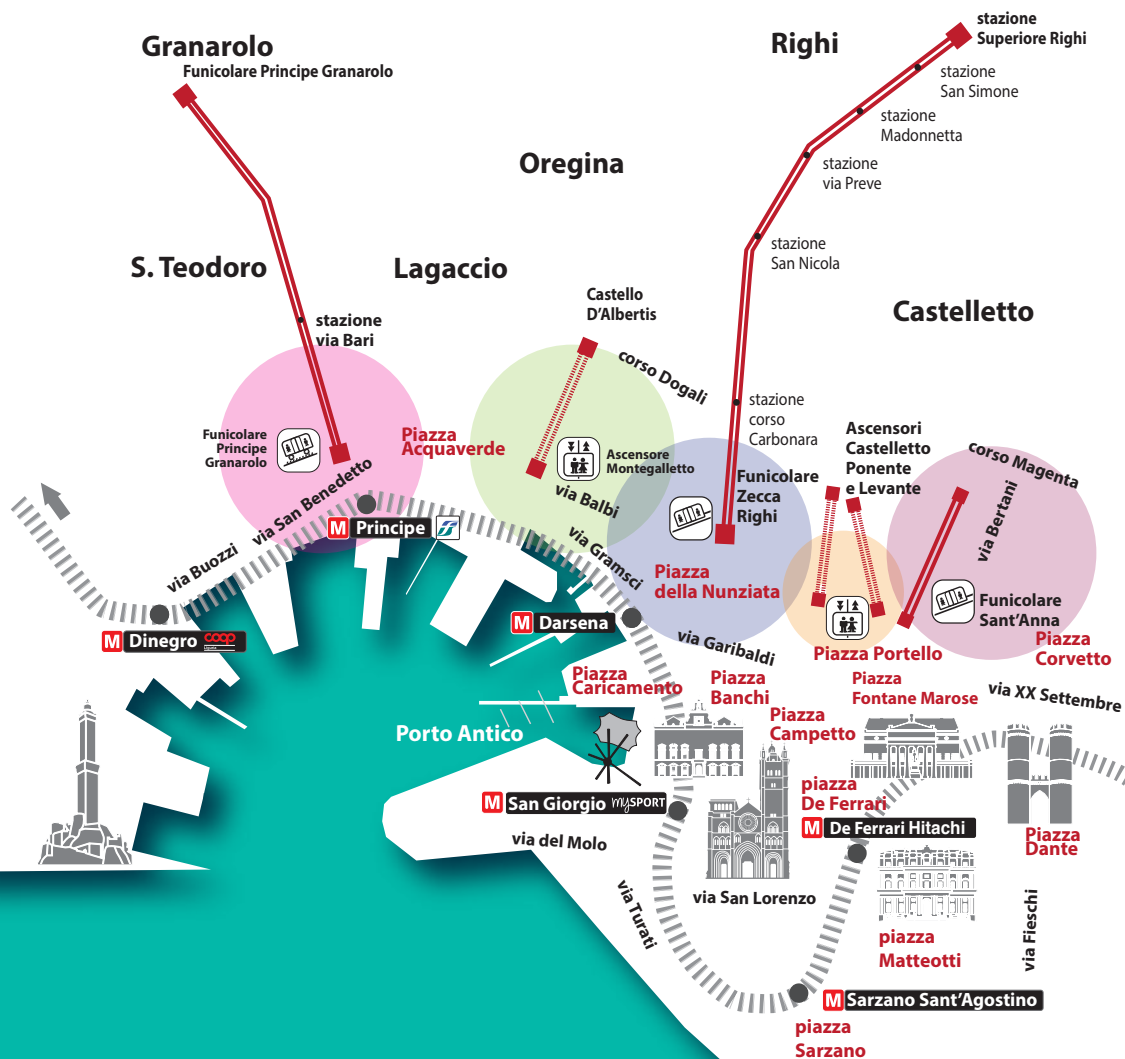


# ON TOP OF THE CITY

with AMT's vertical mobility system

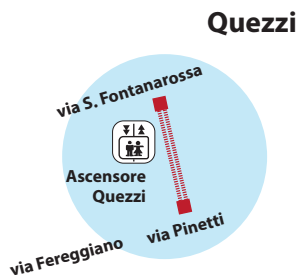
VERTICAL SYSTEMS  
FREE UNTIL  
31 DECEMBER 2022







# A unique mobility system



Piazza  
Manin

Piazza  
Piccapietra

Piazza  
Brignole

M Brignole

Piazza  
Verdi

viale Brigata Liguria

viale Brigata Bisagno

Some innovative transport facilities were developed at the end of the 19th century in order to connect the city centre to the hills.

They are now part of Genoa's vertical mobility system, which combines the beauty of the views over the city with the charm of history and the genius of a technological dawn that marked the development of transportation engineering to the present day.





# Zecca-Righi Funicular (1897)

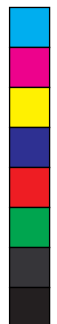
Built between 1895 and 1897 to serve the growing hilly districts, today the funicular is a “small metro” which climbs for 1,500 metres from the centre to the hills of Righi. Along the route, travellers can admire breathtaking panoramas down to the sea and capture the urban development audacity from an unusual point of view.



## Things to do

Don't miss the view from the funicular panoramic terraces. At a short distance, the Astronomical Observatory, an adventure park, restaurants and trattorias of secular long-standing tradition and the Peralto Park.





Type: Funicular Zecca-Righi  
From: Largo Zecca  
To: Righi  
Timetable: every day 06.40 – 00.00  
Length: 1430 m  
Capacity: 150+1 persons  
Frequency: about 15'-20'  
Journey time: about 12'





# Castelletto Levante Lift (1909)

Its plastered walls, glass windows and decorations, recently restored according to the original drawings, give the feeling of a trip back to the last century.

From the heart of the city, the lift leads to Spianata Castelletto and its tree-lined balcony: a unique and unmissable view.



## Things to do

Comfortably sitting on the benches of the esplanade, you can taste ice creams and pastries of renowned tradition.







Type: Lift Castelletto Levante  
From: Portello square  
To: Esplanade Castelletto  
Timetable: every day 6.40 – 00.00  
Length: 57 m  
Capacity: 25 persons/cabin  
Frequency: uninterrupted service  
Journey time: about 1,5'



# Sant'Anna Funicular (1891)

Genoa's most ancient funicular was opened in 1891, and was operated with a water-powered system, based on the counterweight principle. The driver of the upper station car filled a big tank situated in the lower part of the car, calculating the amount of water needed on the basis of the number of passengers on board the two cars. The heavier descending car pulled up the ascending car to which it was connected by a cable.

The original system was abandoned at end of the '70s with the building of a new one, compliant with the new regulations in force. The funicular has no intermediate stations and, thanks to its position, offers exclusive views on some historic buildings in Genoa.

## Things to do

A few steps away from the funicular you can meet cafeterias, ice cream parlours and typical places where you can taste pizza and farinata. Walking for 10 minutes through the heart of Castelletto district, you reach the historic park of Villa Gruber, walking along Corso Magenta and Corso Solferino.



**M De Ferrari Hitachi**





Type: Funicular Sant'Anna  
From: Portello square  
To: Corso Magenta  
Timetable: every days 7.00 – 00.30  
Length: 370 m  
Capacity: 30 + 1 persons  
Frequency: uninterrupted service  
Journey time: about 2'





# Montegalletto Lift (1929)

Built in 1929, it was renewed by AMT in 1995. A unique facility which attracts countless visitors thanks to the originality of its transport solution.

The car, towed with a funicular system, travels horizontally through a 250 metre long tunnel, before travelling vertically for 70 metres. From via Balbi you reach Corso Dogali in three minutes.



## Things to do

A visit to the D'Albertis Castle, with its garden open to the public and the Museum of Cultures of the World. A walk along Corso Dogali where, at building number 5, a plaque commemorating reminds the birth of the poet Eugenio Montale. walking further, you arrive at the 18th century Albergo dei Poveri and along Corso Carbonara, to the heart of Castelletto Castelletto from where you can enjoy sweeping views and unexpected glimpses of the city.





Type: Lift Montegalletto  
From: Balbi Street  
To: Corso Dogali  
Timetable: Working day 6.45 – 21.20  
Holiday 8.00/21.00  
Length: 235 m + 70 m  
Capacity: 23 persons  
Frequency: uninterrupted service  
Journey time: about 3'





# Granarolo Cog Railway (1901)

Built in 1901, it may well be the most ancient cog railway in Italy. The historical red cars, with wooden seats, from Lagaccio street takes you the hill of Granarolo and to its original Liberty style station.

con the car climbs up the steep hill on a rail with a third toothed rack rail with cogs engaged by a cogwheel.

Granarolo offers an astonishing panorama of Genoa and the sea.

## Things to do

In the vicinity, the Church of St. Maria (1190), the walls of Granarolo (1600), the Gate of Granarolo (1800).

Walking further on for about 2000 m you reach Piani di Fregoso, where you can enjoy some activities (minigolf) surrounded by green and family-run trattorias.

Walking for about one hour, you arrive at Fort Begato and on to Fort Sperone. A pleasant 1.5 h long walk leads to Peralto Park and Righi Funicolar.







Type: Railway at Gear Rack Granarolo  
From: Lagaccio Street  
To: Granarolo  
Timetable: Working days 6.00 – 24.00  
Holiday 08.00/ 19.30  
Length: 1140 m  
Capacity: 45 persons  
Frequency: about 40'  
Journey time: about 12'  
Maximum incline: 21,4%





# Quezzi Lift (2015)

The path begins in via Pinetti, inside a tunnel that served as an air-raid shelter during the World War II.

The cabin is pushed in the open after 27 metres.

It covers a new 23 metre long trench section (23 metres long), with an intermediate stop and then reaches the upper station.

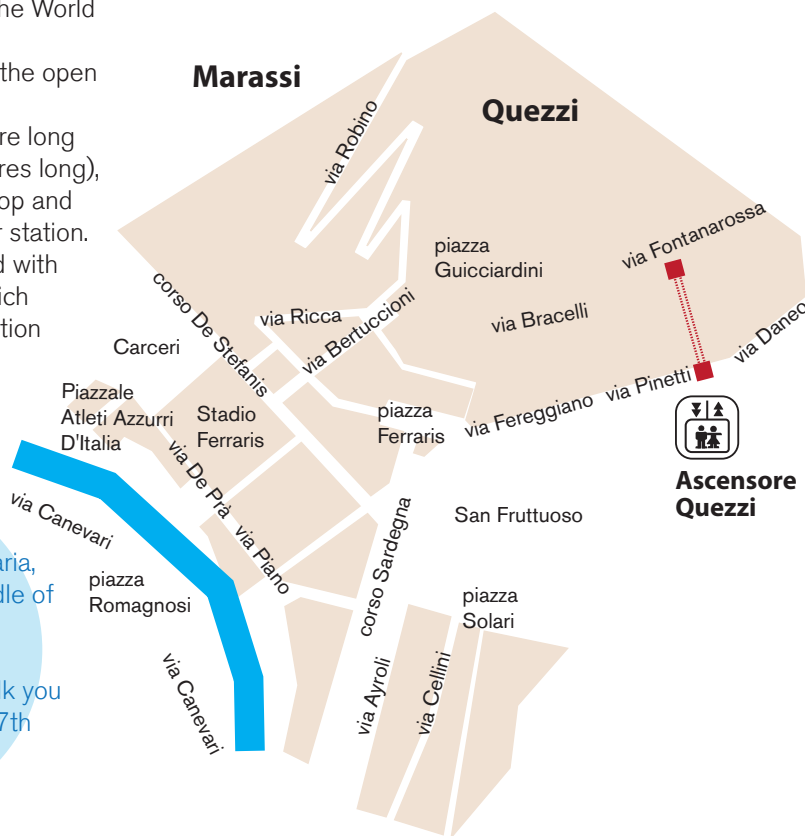
The system is equipped with photovoltaic panels which power the cabin ventilation and lighting.



## Things to do

A visit to the Parish of the Nativity of St. Maria, dating back to the middle of the 12th century.

With a fifty minutes walk you reach Fort of Quezzi (17th century).



**Ascensore  
Quezzi**







Type: Lift of Quezzi  
From: Pinetti Street  
To: Fontanarossa  
Timetable: from Monday  
to Saturday 6.50 – 19.50

Length: 131 m  
Capacity: 25 persons  
Frequency: continued routes  
Journey time: about 2'





# Castelletto Ponente Lift (1909)

This lift, built in 1929, is made of wood similar to an elegant living room rather than a vertical transportation system.

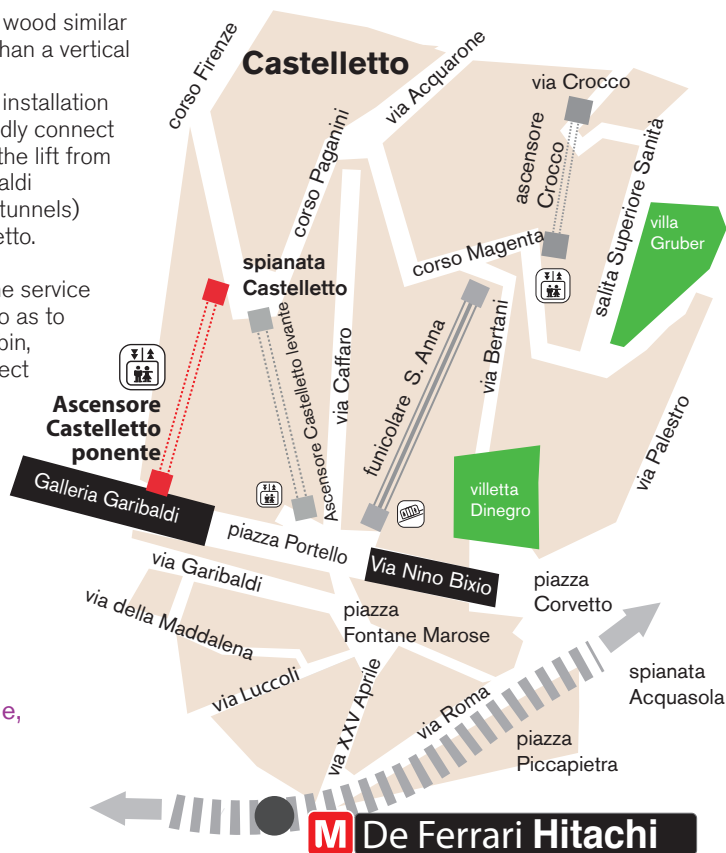
Equal to the Castelletto-Levante installation it was born from the need to rapidly connect the Historical Centre (access to the lift from Piazza della Meridiana/Via Garibaldi or Piazza Portello was by way of tunnels) to the residential area of Castelletto.

After 30 years of technical life the service was suspended in March 2018 so as to modernize it and restore the cabin, which maintained its original aspect and materials.

Restoration carried out on the plasters also preserved their antique fascination.

## Things to do

Comfortably sitting on the benches of the esplanade, you can taste ice creams and pastries of renowned tradition.





Type:	Lift Castelletto Ponente
From:	Galleria Garibaldi
To:	Esplanade Castelletto
Timetable:	every day 6.40 – 00.00
Length:	63 m
Capacity:	28 persons/cabin
Frequency:	uninterrupted service
Journey time:	about 1'





## Other lifts run by AMT:

### Manin Contardo

Connects Manin square to Contardo street.  
Open on working days from 6.05 to 24.00 and  
on holidays from 7.20 to 24.00.

### Ponte Monumentale

Connects XX Settembre street to Corso  
Andrea Podestà in the Carignano district.  
Open on working days from 6.25 to 21.40 and  
on holidays from 8.00 to 20.30.

### Montello Ponterotto

Connects Ponterotto street to Montello street.  
Open on working days from 7.00 to 20.55 and  
on holidays from 7.40 to 19.45.

### Bari Centurione

Connects Adamo Centurione street  
to Bari street. Open on working days  
from 6.30 to 20.30.

### Mura degli Angeli

Connects Dino Col street to Mura degli Angeli  
street. Open on working days from 6.10 to  
21.30 and on holidays from 7.55 to 21.15.

### Magenta Crocco

Connects Corso Magenta to Crocco street.  
Open on working days and holidays  
from 6.55 to 0.40.

## Fares

The special facilities of AMT  
can be boarded with:

- Yearly, monthly, weekly and 24h passes;
- Single route ticket  
(lifts, Sant'Anna funicular € 0.90)
- 100 minutes ticket AMT network,  
including the Zecca-Righi funicular  
and the railway Granarolo.

Vertical systems free  
until 31 december 2022.

## Contacts

Customer Care  
848 000 030 / 010 55082 41  
[servizioclienti@amt.genova.it](mailto:servizioclienti@amt.genova.it)  
[www.amt.genova.it](http://www.amt.genova.it)









# CONTACTS

**[www.amt.genova.it](http://www.amt.genova.it)**

Customer Care 0039 010 55 82 414 - 848 000 030

[servizioclienti@amt.genova.it](mailto:servizioclienti@amt.genova.it)



**Pick up your copy  
at our AMT points!**  
Explore Genoa by bus  
and get the most out  
of your trip.



**Download the  
AMT APP**  
to use best our network



**GE  
NO  
VA**  
MORE THAN THIS

